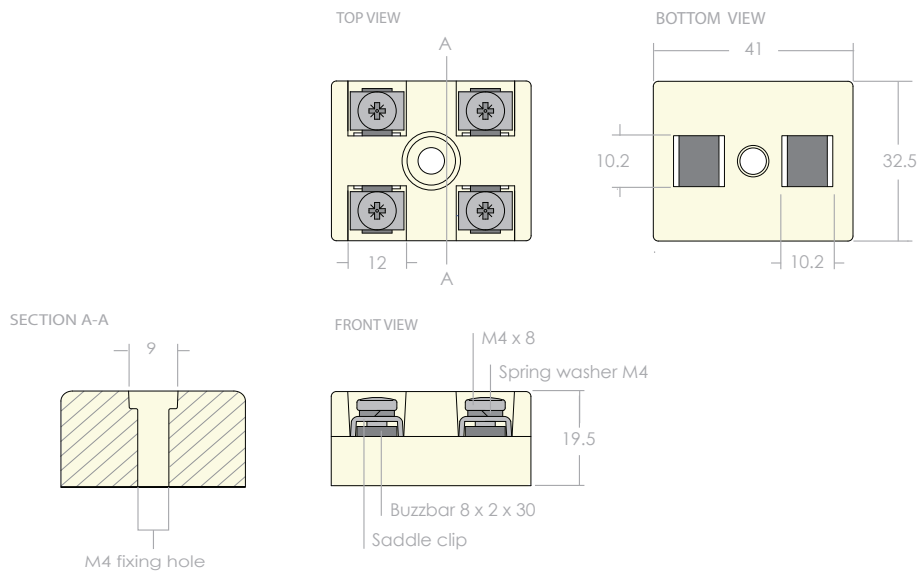
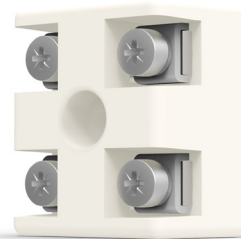


2P Ceramic Terminal Block



Technical specification

Material	Stainless steel fitting, body Steatite C-221
Deminsions	41 x 32.5 x 19.5 mm
Average Weight	53g
Packed Weight	545g (per 10)
Mamimum Voltage	500 V
Maximum Temperature	450 °C
Maximum Cable CSA(Solid)	4 mm ²
Maximum Cable CSA(Stranded with ferrule)	2.5 mm ²
Maximum Current	20 A Up to 30 A permissible at lower temperatures.



Maximum voltage: 500V
 Maximum temperature: 450°C / 842°F
 Maximum current: 20A*
 Maximum cable CSA (solid): 4.0mm sq.
 Maximum cable CSA (stranded/with ferrule): 2.5mm sq.

*Up to 30A permissible at lower temperatures.

2P CERAMIC TERMINAL BLOCK

2P-0700
 *All dimensions are mm. post firing (final dimensions)
 *All dimensions specified on ceramic material have a tolerance of +/- 3%.

