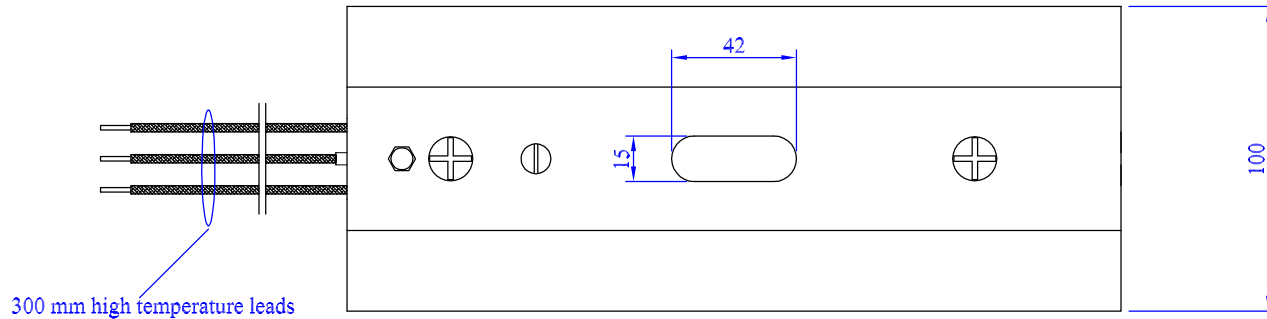
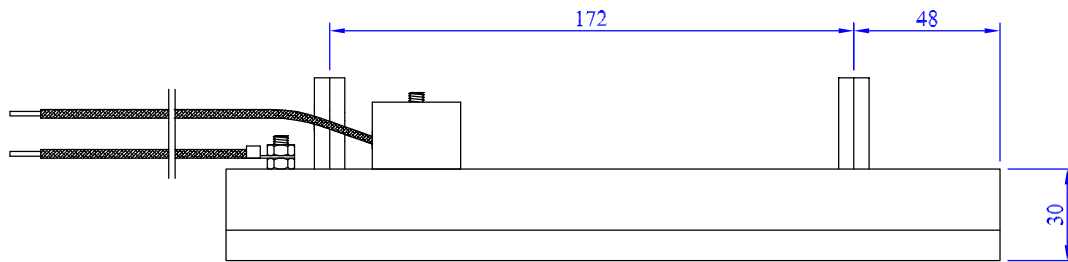


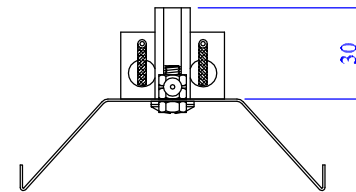
RevNo 0	Revision note No Revisions	Date xx/xx/xx	Signature J.W.	Checked
------------	-------------------------------	------------------	-------------------	---------



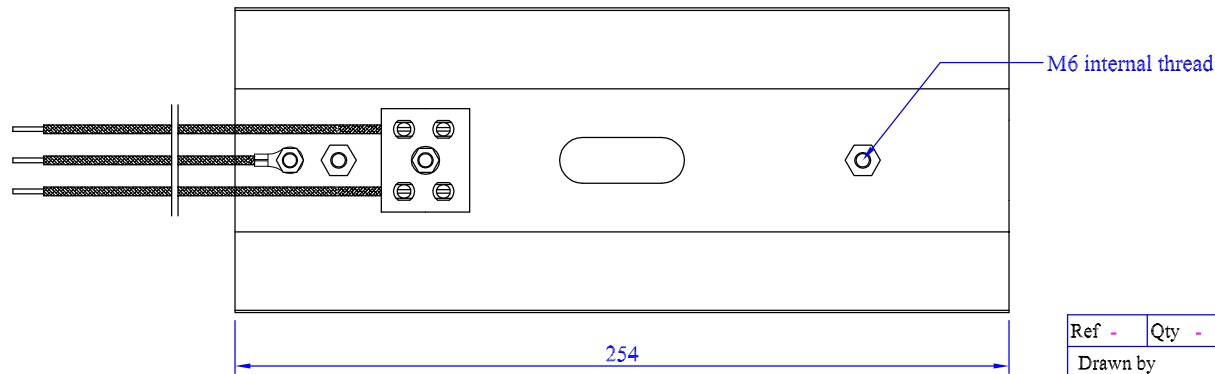
FRONT VIEW



SIDE VIEW



END VIEW



REAR VIEW

* All dimensions are mm [inches]
 * Reflector material: 0.75mm [0.03"] polished aluminised steel

Ref -	Qty -	RAS1 Unassembled			Part no.
Drawn by J.W.	Checked by D.W.	Tolerance +/- 1	Filename RAS1300600A	Date 30/06/00	Scale Not to scale
			Title RAS1		
			Drawing no. 300600A		Edition 1